

003/2006.

EXPERT OPINION

The assessor:

Kerekesi Andrea
Andrea Kerekes



Budapest, 21/03/2006

Antecedent:

The **principal** orders the expert a signature identification: he would like to be sure that signature of „John Lennon“ on the owned object originated in 1961 (two pairs of footprint in slice sphere made by gypsum – see Appendix 1) is signed by the world-famous musician called John Lennon.

For the review the expert could survey the object and she took photos of the object and the signatures on it (resolution: 2 megapixel).

No other object was available for the review.

The question for the expert:

- 1./ On the object, according to the principal, originated in 1961 (two pairs of footprint in slice sphere made by gypsum, number 1961 is also graven in the object), is the signature „John Lennon“ signed by the owner of the name?

The subject of the review:Asked signature:

- 1./ The „John Lennon“ signature located on the object, which according to the principal originated in 1961 (two pairs of footprint in slice sphere made by gypsum, number 1961 is also graven in the object). The expert took photos (2 megapixel digital photos) of the signature with different settings. The expert could analyse these photos.

Comparative signatures:

The comparative signatures came from the internet, from several web sites stating that they publicize original photos of John Lennon's signature, as below:

- 2./ „John Lennon“ signature from 1960;
- 3./ „John Lennon“ signature from 1963;
- 4./ „John Lennon“ signature from 1963/64;
- 5./ „John Lennon“ signature from 1964;
- 6./ „John Lennon“ signature from 1964;

- 7./ „John Lennon“ signature from 1964;
- 8./ „John Lennon“ signature from 1965;
- 9./ „John Lennon“ signature from 1967;
- 10./ „John Lennon“ signature without year;
- 11./ „John Lennon“ signature from 1975;
- 12./ „John Lennon“ signature from 1975;
- 13./ „John Lennon“ signature without year.

Review methods, tools, preliminary review:

During the review the expert applies direct observation, complex measurement and instrumental methods, analysing and comparative ways based on the static, dynamic and global (complex) variables of the handwriting.

The available samples are necessary and sufficient for making the review, but the low quality of the asked and comparative samples are not allow a categorical opinion. The asked sample is on a strange surface, some pieces of it is not proper for review. The comparative samples are available only in electronic format (imagefile), not in original version.

For demonstration and verification I enlarged the asked and the comparative samples with an image processing software and I cleaned the disturbing line crosses. I fit the asked and comparative samples below each other and I printed out this signature sequence (see Appendix 2). This method is perfect to follow the natural changes of the signature.

I indicate the found individual handmoving-specialities on the **asked sample no. 1 and the comparative samples no. 2, 5, 6, 7, 8, 9, 11 and 13**. The identical specialities are marked with green, the different ones are marked with red colour and with the same number (see Appendix 3).

The review:

In the first phase of the detailed review I discovered the **general features** of the comparable and the asked samples.

The result of the detailed comparative review of the **general features** shows the asked and the comparative samples are similar in the following aspects:

- transcription (signatures from characters),
- build-up (simplified),

- moving-shape (mainly angled),
- moving direction (mainly right, except ovals),
- continuity (continuous/bound),
- character distance,
- inside rate of characters (height-width rate),
- angular offset (slightly right tilt),
- the distance of nameparts.

In the case of following features the asked sample **differs** the comparative samples:

- row direction, row shape,
- writing speed,
- coordination (the coordination of comparative samples are better),
- elaboration (the comparative samples are better elaborated).

The reasons of the differences above likely are based on the writing surface of the asked sample: the signature probably made by pencil on gypsum surface largely differs the ones wrote on paper in this features: the asked sample is a signature wrote in a special format (footprint), on heavy material, slowly and with different character size.

I was not able to compare the emphasis and the line-quality because of the asked and comparative samples' type.

In the next phase of the review I analysed the **individual handmovement features** of the asked and comparative samples and I compared them.

Below I explain the typical **similar individual features** (see Appendix 3 also):

- (1) the amount and direction of movement of beginning line of „J“;
- (2) the direction of „O“;
- (3) angled movement shape of binding-line of „h“;
- (4) angled movement shape of connection of „h“ and „n“;
- (5) angled movement shape of binding-line of „n“;
- (6) the direction of ending-line of „n“;
- (7) air-binding between nameparts;
- (8) lack of beginning line of „L“;
- (9) lack of loop of „L“;
- (10) angled movement shape of binding-line of „L“;
- (11) relative position of „L“ and „e“ (horizontal and vertical);
- (12) the amount, shape and direction of movement of „e“;
- (13) angled movement shape of binding-line of „n“;
- (14) angled movement shape of binding-line between „n“ and „n“;
- (15) angled movement shape of binding-line of „n“;
- (16) angled movement shape of binding-line between „n“ and „o“;
- (17) direction of „o“;
- (18) domed movement shape of binding-line of „n“.

The different individual features are:

- (19) the amount and shape of movement of loop of „j“;
- (20) the amount of movement of „o“;
- (21) the amount and shape of movement of loop of „h“;
- (22) the amount of movement of „o“;
- (23) the amount and direction of movement of ending-line of „n“.

Evaluation:

The amount and quality of discovered features substantiate a presumptive opinion.

Categorical opinion would be possible if an original signature is available from the year 1961 (or +/-1 year).

Opinion:

- 1./ On the object, according to the principal, originated in 1961 (two pairs of footprint in slice sphere made by gypsum, number 1961 is also graven in the object), the signature „John Lennon“

**with high likelihood was
signed by the owner of the name John Lennon.**

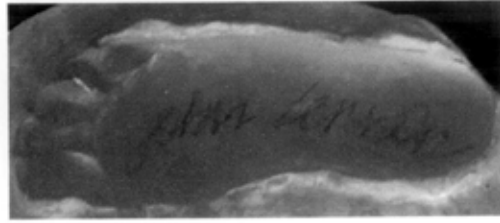
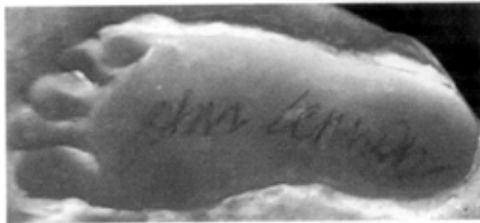
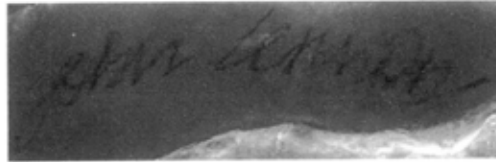
Kerekes Andrea
forensic graphology expert
Graphology Center Ltd.

Budapest, 20/03/2006

APPENDIX 2
John Lennon's signatures

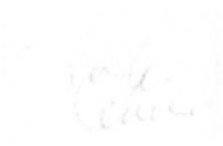
ASKED SIGNATURE:

1.

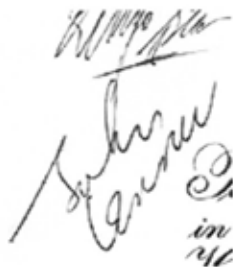


COMPARATIVE SIGNATURES:

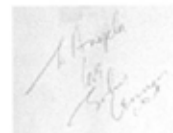
2.



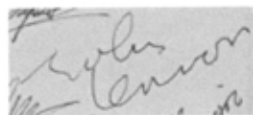
3.



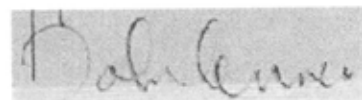
4.



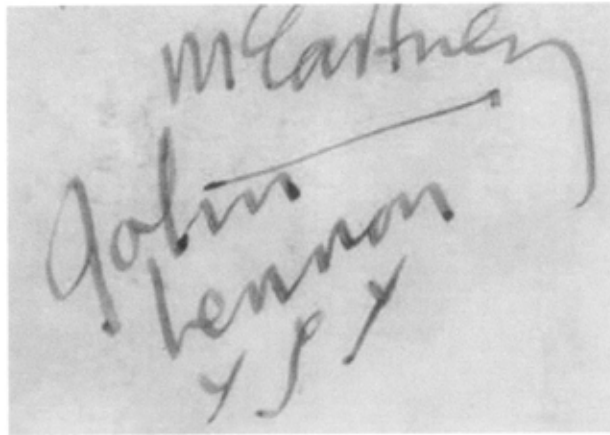
5.



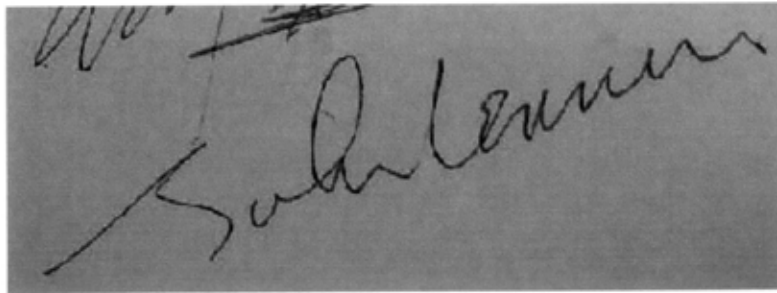
6.



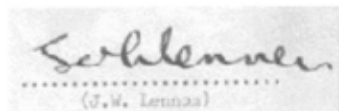
7.



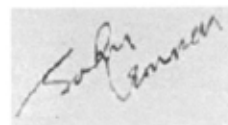
8.



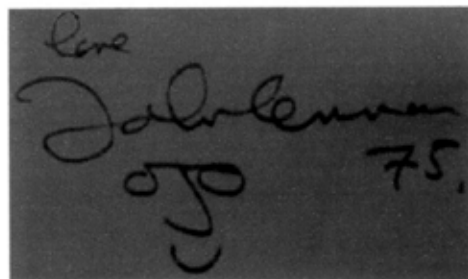
9.



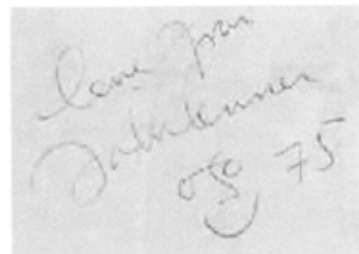
10.



11.



12.



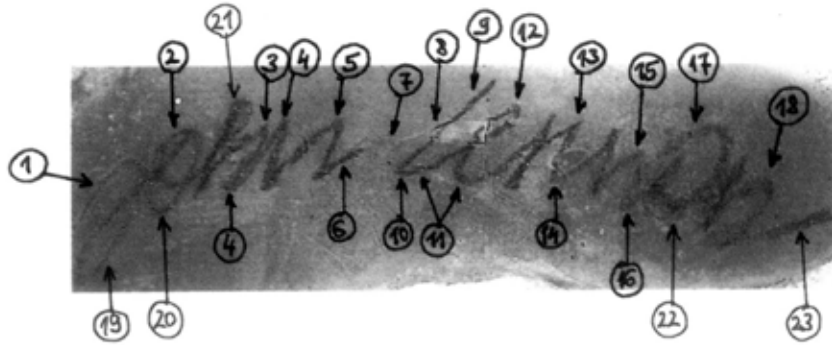
13.

John Lennon

APPENDIX 3 John Lennon's signatures

ASKED SIGNATURE:

1.



COMPARATIVE SIGNATURES:

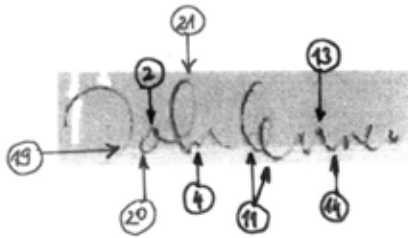
2.



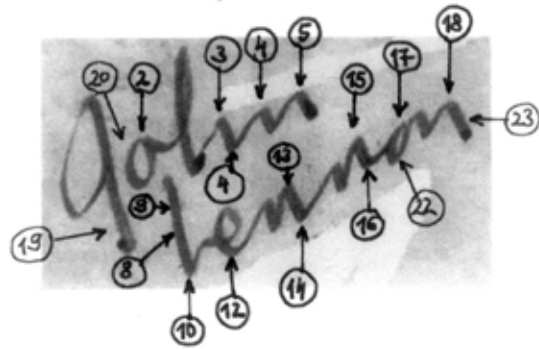
5.



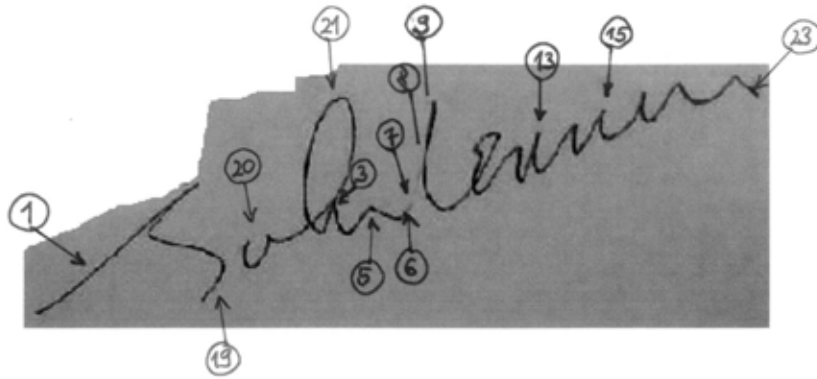
6.



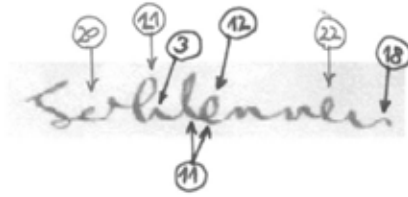
7.



8.



9.



13.



11.

